

Eclipse BoostPak

Packaged Gas Booster Systems

Series ML

Version 2

Medium Flow Duplex with Recirculation Loop

Parameter	Specification						
	ML3314	ML3412	ML4414	ML4617	ML4619	ML4623	ML4628
Model Number	ML3314	ML3412	ML4414	ML4617	ML4619	ML4623	ML4628
Assembly Number	10024900	10024901	10024902	10024903	10024904	10024905	10024906
Booster	HB3314-1/2	HB3412-1/2	HB4414-1	HB4617-1	HB4619-2	HB4623-5	HB4628-5
Minimum Flow (cfh) ^a	750	1,700	3,000	4,600	3,600	11,000	4,900
Maximum Flow (cfh) ^a	5,300	11,600	20,400	23,000	17,800	33,000	14,600
Pressure Boost ("w.c.) ^a	9	7	7	13	18	26	34
Turndown ^a	7:1	7:1	7:1	5:1	5:1	3:1	3:1
Primary Voltage	b, c, d, e	b, c, d, e	c, d	c, d	c, d	c, d	c, d
Motor Horsepower	1/2	1/2	1	1	2	5	5
Approximate Wt. (lbs) ^f	1,600	1,700	1,900	2,400	2,600	3,100	3,300

Notes: a Ratings are nominal, in CFH of natural gas, at standard conditions and depend on customer interface piping.

b 115/230 VAC, 1 Φ, 60 Hz

c 230/460 VAC, 3 Φ, 60 Hz

d 208 VAC, 3 Φ, 60 Hz

e 208 VAC, 1 Φ, 60 Hz

f Weight is approximate.

NEMA 4 rating; NEMA 7 rating option available (footprint increases with this option).

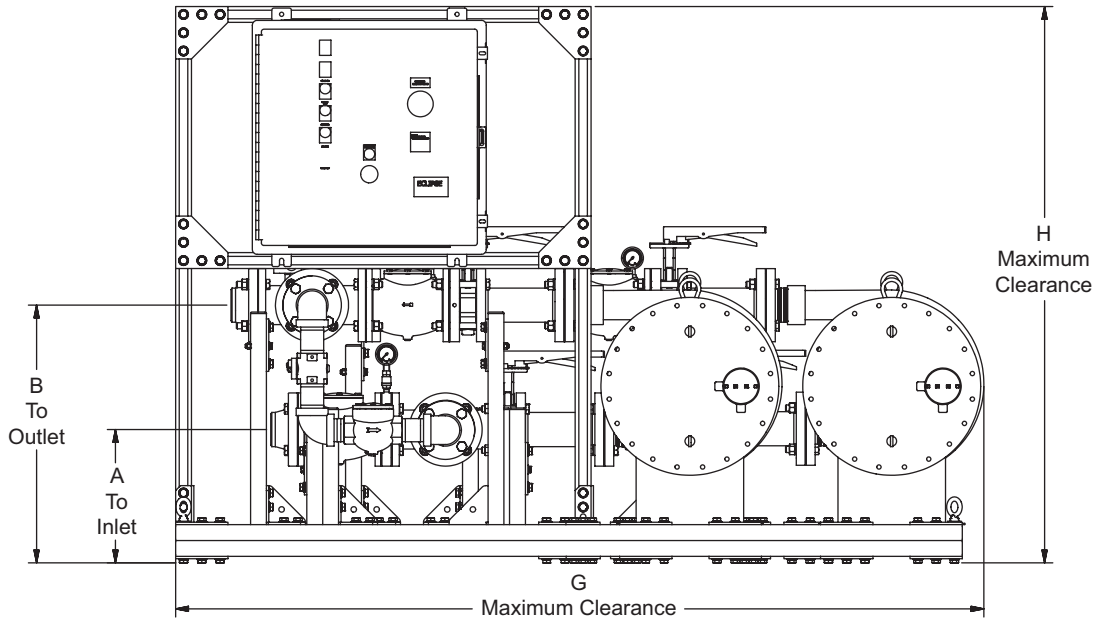
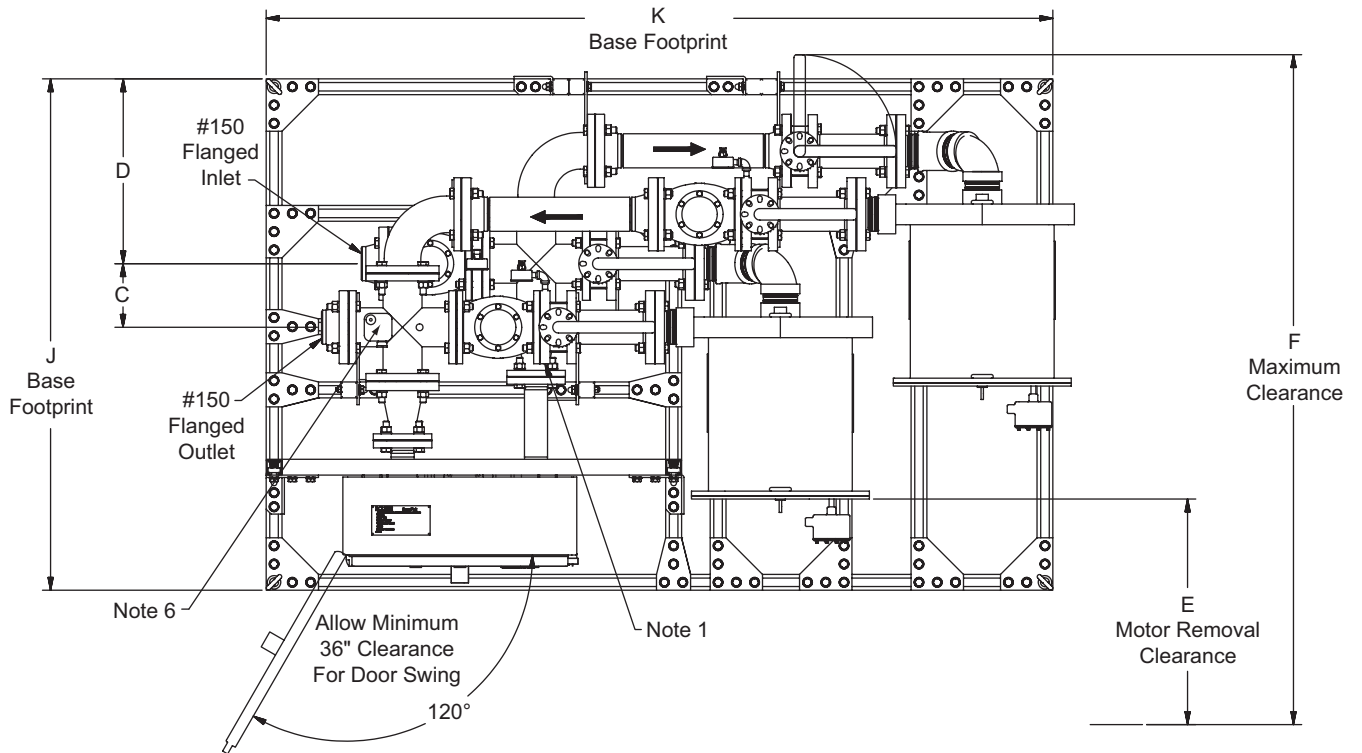
Dimensional Information in Millimeters (in)

BoostPak	Flange Sizes (150#)		Connection Data			
	Inlet	Outlet	A	B	C	D
ML3314	3	3	348 (13.7)	672 (26.5)	166 (6.5)	482 (19.0)
ML3412	4	3	240 (9.5)	612 (24.1)	233 (9.2)	522 (20.5)
ML4414	4	4	278 (11.0)	672 (26.5)	204 (8.0)	523 (20.6)
ML4617	6	4	259 (10.2)	743 (29.2)	307 (12.1)	623 (24.5)
ML4619	6	4	348 (13.7)	881 (34.7)	310 (12.1)	591 (23.3)
ML4623	6	4	373 (14.7)	954 (37.6)	322 (12.7)	592 (23.3)
ML4628	6	4	450 (17.7)	1113 (43.8)	316 (12.4)	594 (23.4)

BoostPak	Maximum Envelope					
	E	F	G	H	J	K
ML3314	737 (29)	1896 (74.6)	2106 (82.9)	1450 (57.1)	1333 (52.5)	2050 (80.7)
ML3412	762 (30)	2057 (80.7)	2101 (82.7)	1400 (55.1)	1333 (52.5)	2050 (80.7)
ML4414	762 (30)	2007 (79.0)	2236 (88.0)	1270 (50.0)	1333 (52.5)	2180 (85.8)
ML4617	762 (30)	2181 (85.9)	2644 (104.1)	1550 (61.0)	1583 (62.3)	2600 (102.4)
ML4619	711 (28)	2094 (82.5)	2689 (105.9)	1700 (66.9)	1533 (60.3)	2600 (102.4)
ML4623	889 (35)	2435 (95.8)	3065 (120.7)	1750 (68.9)	1683 (66.2)	3000 (118.1)
ML4628	965 (38)	2570 (101.2)	3069 (120.8)	1900 (74.8)	1683 (66.2)	3000 (118.1)

Notes: Dimensions shown are nominal. Variations of 2% may occur due to thread engagement and assembly tolerances.

**Dimensions in Millimeters (inches)
Medium Flow Duplex with Recirculation Loop**



- Note 1* Pressure Switch Kit location when factory mounted.
- Note 2* When Pressure Switch Kit is supplied loose by Eclipse, it is to be installed by customer in accordance with local codes.
- Note 3* Customer is to secure Boostpak to foundation through unistrut base (customer drilled holes).
- Note 4* Dimensions shown are nominal. Variations of 2% may occur due to thread engagement tolerances.
- Note 5* Ensure proper clearances for motor removal.
- Note 6* Flow control kit location, when factory mounted.





Offered By:

Power Equipment Company
2011 Williamsburg Road
Richmond, Virginia 23231
Phone (804) 236-3800
Fax (804) 236-3882

www.peconet.com